

Art. Rocks™

"How To" Manual



By Taxidermists

For Taxidermists

Second Edition

Winter 2002

© 2002 All Rights Reserved

"We taxidermists are somewhat limited as to what we can do with a wall mounted fish. I decided to produce a wall display scene that would add some dimension and depth.

This was the first project in which I incorporated Art. Rocks in a habitat scene. Their ease of use was amazing! They are very lightweight, accept just about any adhesive, are easily cut and are easily painted. (Yes, I did some experimenting with them) Most of all...they LOOK GOOD!

I can assure you, this will not be the last time I use Art. Rocks! I see them as a time saver. The "party bonuses" are that they are inexpensive, easily worked and very attractive. I can't make my own rocks any cheaper than the Art. Rocks, considering time and materials. Thanks for a great product."

Rick Jones, Wind River Taxidermy

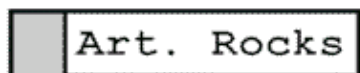
Calling
All
Taxidermists

Becoming a contributor to the Art. Rocks
"How To" Manual is easy and rewarding!
Here's all you do:

- 1) Come up with a habitat idea using Art. Rocks with fish, fowl...anything!
- 2) Take notes and a few pictures as you make the habitat. Be sure to take one of yourself too!
- 3) Send all of your notes and pictures along with your contact information to:

Bob Schweighauser
Art. Rocks
c/o Springfield Internet Stores, Inc.
225 Goldenrod Drive-Suite D
Chatham, Illinois 62629-1682

4) We'll review your submission and if we include your base in our next edition **we'll send you a Variety Box of Art. Rocks free** (one pound of each size, a \$29.75 value!) as our way of saying "Job well done."



**Table
of
Contents**

Wind River Fish Panel by Rick Jones.....5

Long Branch Lake Base by John McGee.....9

Yellow River Raccoon Base by John Finger.....13

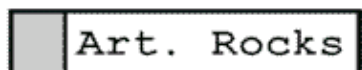
Fast Easy Bluegill Quarry Base by Jeff Morris.....16

Kanektok River Trout Base by Roger Smith.....20

Lake Maxinkuckee Trout Base By John Finger.....24

Reference Photos.....29

List of Suppliers who carry Art. Rocks.....32



Rick Jones
Wind River Taxidermy
168 SE. 431 Road
Warrensburg, Missouri 64093
(660) 429-4115

Rick Jones
Wind River
Fish Panel

Just 39 miles from Kansas City, Rick made the Wind River Fish Panel to give depth to the entire mount.



Rick's Wind River Fish Panel

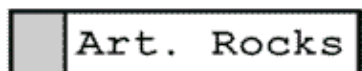
Total Labor Time: 50 minutes

Materials Needed:

- 1 walnut round panel
- 12" piece of driftwood
- 6 oz. Elmer's glue
- 1 panel hanger
- 1 package of sheet moss
- 1 lure
- 1 hot glue stick
- 2 2" screws (to fasten driftwood)
- Super glue (to glue hooks on lure in place)
- 1 Large Green River Art. Rock
- 25-30 Small Green River Art. Rocks
- 1/2 cup Snake River Gravel Chips Art. Rocks

Equipment Needed:

- Hacksaw
- Drill and bits
- Screwdriver
- Hot glue gun
- Paintbrush (to apply Elmer's glue)



Rick Jones
Wind River
Fish Panel

1) "Paint" on Elmer's glue to within one inch of the panel edge.



HINT: No masking is necessary. Just be sure to follow the outline of the panel closely.



2) Once glue is applied, generously cover glued area with sand and pour off excess to use later.

3) Repeat steps 1 and 2 two to three times to achieve a good thick layer of sand.



4) Once glue is dry under the sand, attach driftwood.

Art. Rocks

5) With a hacksaw, cut Large Green River Art. Rock in half and hot glue both halves on the sand near the bottom of the panel.

6) Hot glue Small Green River Art. Rocks above the Large Green River Art. Rocks.

HINT: Your results will be more predictable if you situate the Art. Rocks first as a "trial run", then glue them permanently.

Rick Jones
Wind River
Fish Panel



7) Follow gluing the Small Green River Art. Rocks with glueing the Art. Rocks Snake River Gravel Chips.

8) Hot glue the moss just under and around the driftwood and Large Green River Art. Rocks.



Art. Rocks

Rick Jones
Wind River
Fish Panel

9) Install your hanger and the fish. I like to use a slice of driftwood behind my panel-mounted fish to add depth.

10) Apply fishing lure by first drilling a hole in the driftwood just slightly larger than a piece of scrap "bird wire".

11) Drill the same size hole in the back of the lure.

12) Apply super glue to the wire and insert into the driftwood and the back of the lure.

13) Tie a piece of fishing line to the lure, bring it around the back of the driftwood and glue into place.

14) Super glue treble hooks in position.



The finished Wind River Fish Panel!

Art. Rocks

John McGee
Creek Nation Taxidermy Studio
320 West Orrick St.
LaPlatta, Missouri 63549
(660) 328-4948

John McGee
Long Branch
Lake Base

On John's business card it states,
"Fish Are Our Only Business".
Mostly, his art is done wholesale.



McGee's Long Branch Lake Base

Total Labor Time: 25 minutes

Materials Needed:

- 1 octagon base
- 1 piece of driftwood
- 10 oz. paintable caulk
- 2 2" screws (to fasten driftwood)
- 1-5 Large Green River Art. Rocks
- 5-10 Small Green River Art. Rocks
- 1/4 bag Snake River Gravel Chips Art. Rocks

Equipment Needed:

- Airbrush
- Drill and bits
- Screwdriver
- Hand file
- Paintbrush (to apply caulk)

Art. Rocks

John McGee
Long Branch
Lake Base



1) Attach driftwood to base.

HINT: Make sure surface of base is clean and dry.

2) Apply a generous coat of caulk to base. Cover entire area you want to cover with Art. Rocks 1/8" to 1/4" thick.



3) Pour Snake River Gravel Chips Art. Rocks over the caulk and press into place with your hands. Work the Gravel Chips around to achieve best coverage.

Art. Rocks



John McGee
Long Branch
Lake Base

4) Any obvious voids may be covered by placing individual pieces Gravel into the uncovered space.

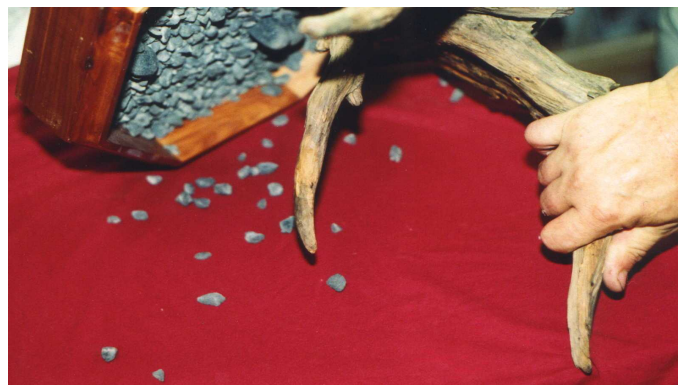


5) With caulk, place the larger Art. Rocks (Kane River, Small Green River, Large Green River Rocks) in areas you want to break up or cover up.



6) If you want a specific rock in an area that just doesn't fit right, take a hand file or Dremel-type tool and cut it to fit. This is very helpful when covering attachments on pedestal mounts. You can make the rock fit perfectly.

7) Once glue has set, turn base upside down to remove excess gravel. Any voids can be fixed with a small amount of caulk and Snake River Gravel Art. Rocks.



Art. Rocks

John McGee
Long Branch
Lake Base



8) Spray on a light coat of medium bass green to simulate algae growth.

9) Once dry, your base is ready for additional scenery you'd like to add, like a lure and lake moss.



The finished Long Branch Lake Base

Art. Rocks

John Finger
C J's Taxidermy
1125A 174th Street
Potsville, Iowa 52162
(563) 567-8575

John Finger
Yellow River
Raccoon Base

Located in northeast Iowa, John does commercial and wholesale mounting.



John's Yellow River Raccoon Base

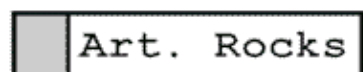
Total Labor Time: 45 minutes

Materials Needed:

- Plywood base (1/2 inch thick)
- Airbrush Paint (for base Art. Rocks)
- Masking Tape
- Fin Backing Glue
- 1-5 Large Green River Art. Rock
- 5-10 Small Green River Art. Rocks
- 1 cup Snake River Gravel Chips Art. Rocks
- 1 Cup Black River Sand Art. Rocks

Equipment Needed:

- Saw
- Sandpaper
- Airbrush
- Drill bits
- Paintbrush (to apply glue)



John Finger
Yellow River
Raccoon Base

1) Cut desired base from
1/2 inch plywood.

2) Sand plywood and airbrush
with light brown paint.

3) Place mount on platform in desired position.
Mark and drill holes for wire.

HINT: Put masking tape on underside of holes
to keep glue from running through.



4) Spread glue (I
use fin backing
glue) on base.

5) Spread Snake
River Gravel
Chips Art. Rocks
on glue, then
cover with Black
River Sand Art.
Rocks.



6) After glue has set up, gently shake off excess sand.

Art. Rocks

7) Airbrush the larger Art. Rocks
the color you need and glue them
to the base.

John Finger
Yellow River
Raccoon Base



8) Place mount on platform and complete with twigs,
crayfish, etc.



The completed Yellow River Raccoon Base

Art. Rocks

**Jeff
Morris
Fast & Easy
Bluegill
Quarry Base**

Jeff Morris
Big River Taxidermy
POB 236, 258 Main Street
Lansing, Iowa 52151
563-538-3840

Within a stone's throw of the Mississippi River,
Jeff stays busy all year long.



Fast & Easy Bluegill Quarry Base

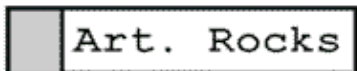
Total Labor Time: 20 minutes

Materials Needed:

- 1 Art. Rocks Council Bluffs Base
- 1/4 lb. Large Green River Art. Rocks
- 1/4 lb. Small Green River Art. Rocks
- 1/4 lb. Kane River Art. Rocks
- 2 6" pieces heavy gauge wire
- 2-3 hot glue gun sticks
- Gray lacquer paint for airbrush
- Floral Moss
- Fish gloss

Equipment Needed:

- hot glue gun
- power drill
- airbrush
- small hammer



1) Airbrush Art. Rocks Council Bluffs Base with Gray lacquer paint.



**Jeff
Morris**
Fast & Easy
Bluegill
Quarry Base

2) Choose one Large Green River Rock to use as pedestal to attach fish to later and build base around.



3) Drill hole in both ends of the pedestal rock and one in the base.

4) Hot glue heavy gauge wire into pedestal rock and base.



Art. Rocks

**Jeff
Morris
Fast & Easy
Bluegill
Quarry Base**

TIP: Take a small hammer and gently bend and hammer the excess wire right back into the base.



5) Build up the base by hot gluing Large and Small Green River Rocks around the pedestal working your way out and up.

6) Fill in "holes" by hot gluing Kane River Art. Rocks.



7) Mount fish and hot glue moss around bottom edges.



Art. Rocks



**Jeff
Morris
Fast & Easy
Bluegill
Quarry Base**

8) Spray the entire base and fish with fish gloss to give base "the wet look" and you are done!



Jeff's finished Fast & Easy base!

Art. Rocks

**Roger
Smith
Kanektok
River Trout
Base**

Roger Smith
1100 Kane Street
Lacrosse, Wisconsin 54603
608-784-0032

Roger has been hunting and fishing his entire life. He loves to help his taxidermy friends and work with Art. Rocks.



Kanektok River Trout Base

Total Labor Time: 30 minutes

Materials Needed:

- 1 Walnut Base
- 1 piece of driftwood
- 2 Large Green River Art. Rocks
- 6 Small Green River Art. Rocks
- Handful Kane River Art. Rocks
- Handful Art. Rocks Snake River Gravel Chips
- 1 cup Art. Rocks Black River Sand
- 1 hot glue gun glue stick
- Bondo
- 3 wood screws

Equipment Needed:

- hot glue gun
- power drill
- coffee can top stir palette (for Bondo)

Art. Rocks



1) Decide where driftwood and Large Green River Art. Rock will be attached and mix bondo.



2) Spread bondo on base where you will be adding Art. Rocks. NOTE: Do not spread bondo where you will be attaching the driftwood or anchor Art. Rock.



3) Liberally sprinkle mix of Black River Sand and Snake River Gravel Chips over bondo and pat down with your hand.



4) Spread bondo on the bottom of the anchor rock and attach to base.

**Roger
Smith
Kanektok
River
Trout
Base**

5) Hot glue Kane River, Small and Large Green River Art. Rocks to desired places on the base.



6) Tap off unadhered Black River Sand and Snake River Gravel Chips. Hot glue Kane River Rocks into any holes that expose the bondo.



7) Determine how the piece of driftwood will be set and use wood screws to attach to walnut base.



8) Hot glue Kane River Rocks, Snake River Gravel Chips and Black River Sand (if necessary) to fill in area around base and driftwood to conceal wood screws and gaps.





Roger
Smith
Kanektok
River Trout
Base

9) Attach fish to driftwood in desired
Position and you're done!



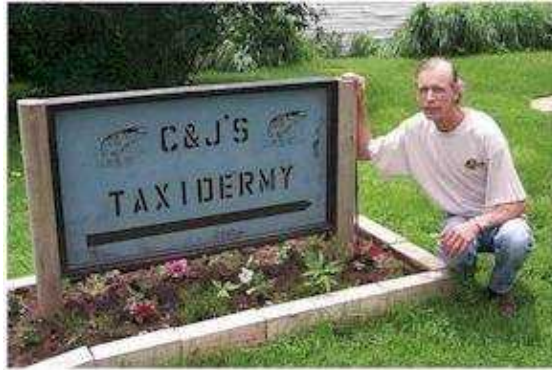
Roger's finished Kanektok River Trout Base!

Art. Rocks

John Finger
C J's Taxidermy
1125A 174th Street
Potsville, Iowa 52162
(563) 567-8575

**John
Finger
Lake
Maxinkuckee
Trout Base**

Located in northeast Iowa, John does commercial and wholesale mounting.



John's Lake Maxinkuckee Trout Base

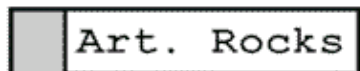
Total Labor Time: 30 minutes

Materials Needed:

- 1 butternut panel
- 12" branch or driftwood
- masking tape
- flexible fin glue, super glue
- 2 wood screws
- 1 cup Black River Sand Art. Rocks
- 3-4 Small Green River Art. Rocks
- 1 Large Green River Art. Rock
- black, brown white lacquer paint
- polyurethane
- clear casting resin
- 15 drops casting resin catalyst hardener
- 4-6 blue resin dye
- "real" brown sand, moss

Equipment Needed:

- razor blade
- brush for flexible fin glue
- power drill (drilling and screwing)
- airbrush, stir sticks



**John
Finger
Lake
Maxinkuckee
Trout Base**

1) Place masking tape over light wood ring.



2) Use a razor blade (or scalpel) to cut out excess masking tape from the dark wood.



3) Inside the masking tape, cover with a thin layer of flexible fin glue.



4) Attach 12" branch or driftwood to base with super glue and wood screw.



**John
Finger
Lake
Maxinkuckee
Trout Base**



5) Sprinkle a cup of Art. Rocks Black River Sand over drying flexible fin glue. Not too much, because you will need to make areas for larger Art. Rocks.



6) Cut Large Green River and Small Green River Art. Rocks with coping saw to make flat surface to glue onto base.



7) Airbrush the Large Green River and Small Green River Art. Rocks black and white brown.

8) As you paint the Art. Rocks, put them flat side down (the side you cut) on the base with a little extra flexible fin glue.



Art. Rocks

**John
Finger
Lake
Maxinkuckee
Trout Base**

TIP: Gently push the Black River Sand to the "down stream" side with the larger Art. Rocks when placing them flat on the base.

9) Generously sprinkle "real" brown sand over the entire base and do some other work for half an hour. Then knock off all of the sand from the base and take off the tape.

10) Mix up a small batch of polyurethane top coat and put it in your airbrush color cup and lightly coat the branch/driftwood.





11) Spread a little fin glue on areas where you are going to place floral moss and add moss.

**John
Finger
Lake
Maxinkuckee
Trout Base**



12) Make a batch of clear casting resin with 15 drops of catalyst hardener and 6 drops of blue resin dye and spread thin layer over whole base (including moss) while base is slightly tilted to give it a 'flowing' look. Let dry completely and attach your fish.



The Finished Lake Maxinkuckee base!

Art. Rocks

Reference
Photos

Brook Trout
at unknown
location.



Photo by: U.S. Government.



Grizzly print
on sand bank of
Kanektok River,
Alaska.

Photo by: Bob Schweighauser

Rockbridge River,
Rockbridge, Missouri

Photo by: Bob Schweighauser



Art. Rocks

Reference
Photos



Bank of the
Kenektok
River, Alaska

Photo by: Bob Schweighauser

Payette River,
Idaho



Photo by: U.S. Government

Reference
Photos

Shore of Reindeer
Lake, Saskatchewan,
Canada



Photo by: Bob Schweighauser



Rover Rock of
unknown origin

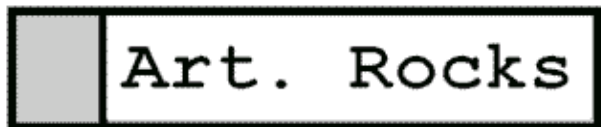
Photo by: U.S. Government

Art. Rocks are available from:

Van Dyke's	800-843-3320
Research Mannikins	800-826-0654
WASCO	800-334-8012
Authentic Taxidermy Supply	800-264-1801
Al Holmes Taxidermy Supply	800-465-6371
Dixieland Taxidermy Supply	800-465-4577
Lone Star	www.lonestartaxidermy.com
Quality Taxidermy Supply	888-527-8722
Sugar Pine Woodcarving Supplies .	800-452-2783

*"Bob, I bought some of your Art. Rocks at the World Show. I had a chance to use some of them on a few customer mounts, as well as a competition Mount for the Missouri State Show. All I can say is **WOW!** I use them in EVERY commercial mount I do in some way or another. Not much you can't do with them! Great for hiding the attachment on pedestal Walleye mounts. Just drill a hole in it, run the rod through it, and let the fish belly just touch the rock. No mucking around with rock mix, mache or any of that other stuff. You have come up with a true winner. I can't thank you enough. Customers are just wild about them."*

John McGee/Creek Nation Taxidermy Studio



c/o Springfield Internet Stores, Inc.
225 Goldenrod Drive - Suite D
Chatham, Illinois 62629-1682
Phone: 877-483-4547 (toll free)
Fax: 877-483-4540 (toll free)
Email: bobs@motion.net